

# Adopt-A-Room

The Adopt-A-Room program offers a yearlong sponsorship of one of our guest rooms, long-term suites, apartments, or community kitchens. Adopt-A-Room sponsors have an incredible impact on the families who find refuge at the House while their child is hospitalized or receiving care at area hospitals.

Adopt-A-Room sponsors play a significant role in supporting the ongoing operations of the Ronald McDonald House of Chapel Hill. Although it costs the House \$85 per night to support each family, families will not be asked to pay anything!

With substantial medical bills and travel costs, lodging and travel is simply too much for many families to afford. With the help of Adopt-A-Room partners families that walk through our door can find a "home-away-from-home" while only one mile from their child's medical care.

Your sponsorship helps to underwrite the cost of their stay, enabling us to serve all families, regardless of their financial situation or background. Your gift gives parents the ability to focus on the most important thing—the wellbeing of their child.

## Benefits of Sponsorship

- Signage in a high-traffic area with your name and adopted room, which will be seen by thousands of visitors each year.
- Recognition on our website.
- House photos, information and logo (pending approval) to include in your newsletters or public relations materials.
- First right of renewal each year.
- Benefits and recognition extend 12 months immediately following payment.



"Home is just a safe place where you feel like the people there understand you and feel loved. When you're here for just a couple of days, it feels that way."

Jessica Throneburg  
RMHCH Parent



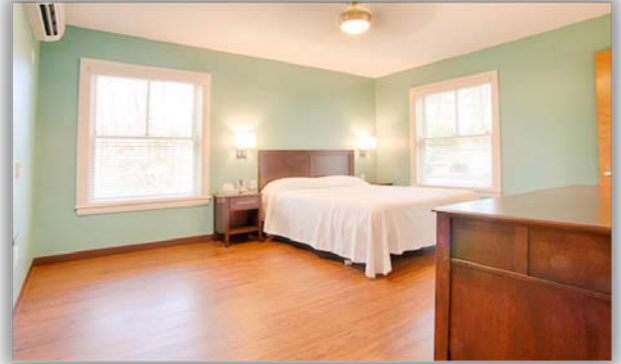
Ronald  
McDonald  
House®  
Chapel Hill

# Sponsorship Opportunities:

The Adopt-A-Room sponsorship program offers various giving levels designed to be inclusive of individual family contributions, small businesses and large corporations.

## Room Sponsor—\$1,000

Adopt one of our 33 standard guest rooms for a \$1,000 annual sponsorship. Your sponsorship supports a hotel-style guest room with private bath for families throughout the year. While staying at the House families have access to regular meals, pantry items, laundry facilities, play areas, comfortable common spaces, transportation to and from the hospital, as well as support from staff and volunteers.



## Long-Term Suite Sponsor—\$2,500

Adopt one of our 12 long-term suites for a \$2,500 annual sponsorship. Your sponsorship supports larger, more private accommodations for families that anticipate being at the House for longer than three weeks. Families not only receive larger guest rooms, but access to a semi-private living room and more kitchen storage for personal food, while enjoying all of the other amenities the House provides. These suites give families a deeper sense of normalcy as they live day-to-day at the House for an extended period of time.



## Transplant Apartment Sponsor—\$5,000

Adopt one of our seven specialty two-bedroom apartments used by transplant families for a \$5,000 annual sponsorship. Your sponsorship supports a fully furnished two-bedroom apartment for guests to utilize while they complete treatment following a transplant. Transplant patients are immunocompromised and require more secluded living quarters to recover. Apartments include a private living room, kitchen, bath and two guest bedrooms.



## Kitchen Sponsor—\$10,000

Adopt one of our two community kitchen spaces for a \$10,000 annual sponsorship. Each year we serve over 500 meals to families who call the House their home while caring for their seriously ill or injured child. Each communal kitchen is open 24-hours a day and is fully stocked with staple food items, snacks and coffee for families to access throughout their stay. Each kitchen is equipped with a pantry for families to store their own groceries, in addition to at least one meal a day that the House provides. The kitchen is a place where families naturally connect to one another and find support over shared experiences.

